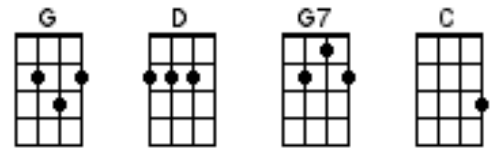


I'M A BELIEVER

Neil Diamond



INTRO:



[G] I thought love was [D] only true in [G] fairy tales
 [G] Meant for someone [D] else but not for [G] me. [G7]
 [C] Love was out to [G] get me *Doo doo doo* [C] doo
 [C] That's the way it [G] seemed *Doo doo doo* [C] doo
 [C] Disappointment [G] haunted all my [D] dreams ↓

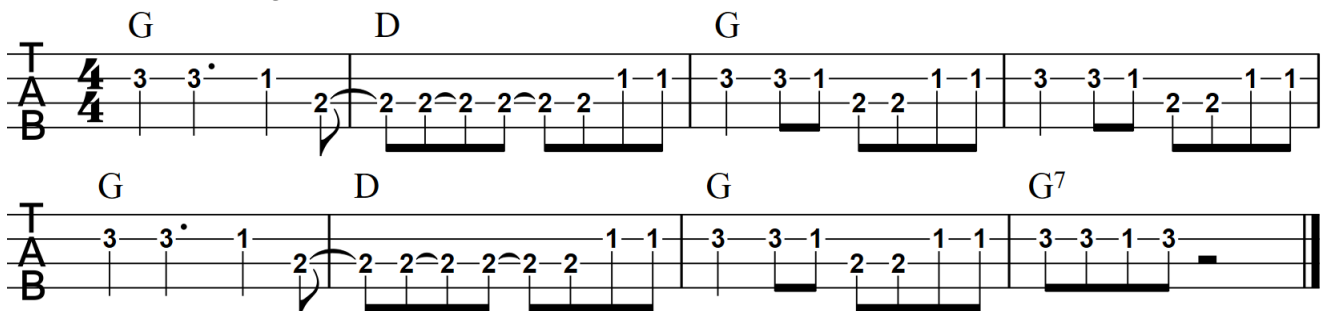
CHORUS

[NC] Then I saw her [G] face, [C] [G]
 Now [C] I'm a be[G]liever! [C] [G]
 [C] Not a [G] trace [C] [G]
 Of [C] doubt in my [G] mind. [C] [G]
 I'm in [G] love, [C] ooh I'm a be[G]liever
 I couldn't [F] leave her if I [D] tried

[G] I thought love was [D] more or less a [G] given thing
 [G] Seems the more I [D] gave the less I [G] got [G7]
 [C] What's the use in [G] trying? *Doo doo doo* [C] doo
 [C] All you get is [G] pain *Doo doo doo* [C] doo
 [C] When I needed [G] sunshine I got [D] rain

CHORUS

(First two lines of next verse can be substituted with instrumental)



[G] I thought love was [D] more or less a [G] given thing
 [G] Seems the more I [D] gave the less I [G] got [G7]
 [C] Love was out to [G] get me *Doo doo doo* [C] doo
 [C] That's the way it [G] seemed *Doo doo doo* [C] doo
 [C] Disappointment [G] haunted all my [D] dreams ↓

CHORUS X 2

I'm a [G] believer! [C] [G] I'm a [G] believer! [C] [G] [G] . . .