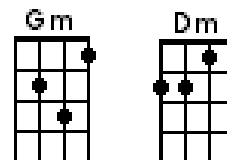


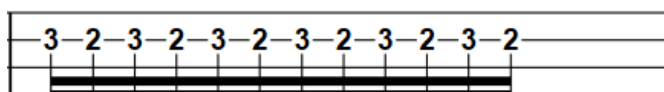
MISSION IMPOSSIBLE THEME

Lalo Schiffrin



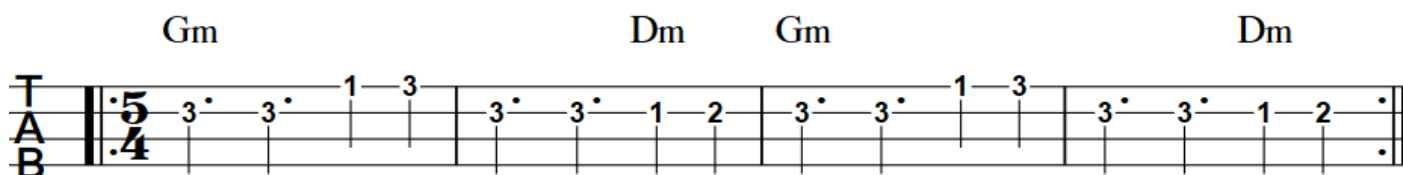
- Begin with or without Introduction
- Some players play Ostinato 1 throughout
- Chords throughout are optional (always the same pattern).
- Ostinato 2 (an octave higher) can be played by Melody players at various points (when Melody is not being played)
- Melody can be played as often as required. There can be gaps between iterations of the melody, when Ostinato 2 may be played.

Introduction (optional)

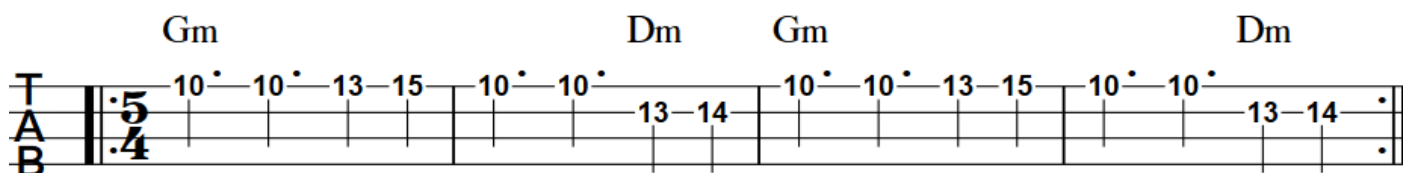


(Hammer on & pull off for rapid notes)

Ostinato 1



Ostinato 2



Melody

